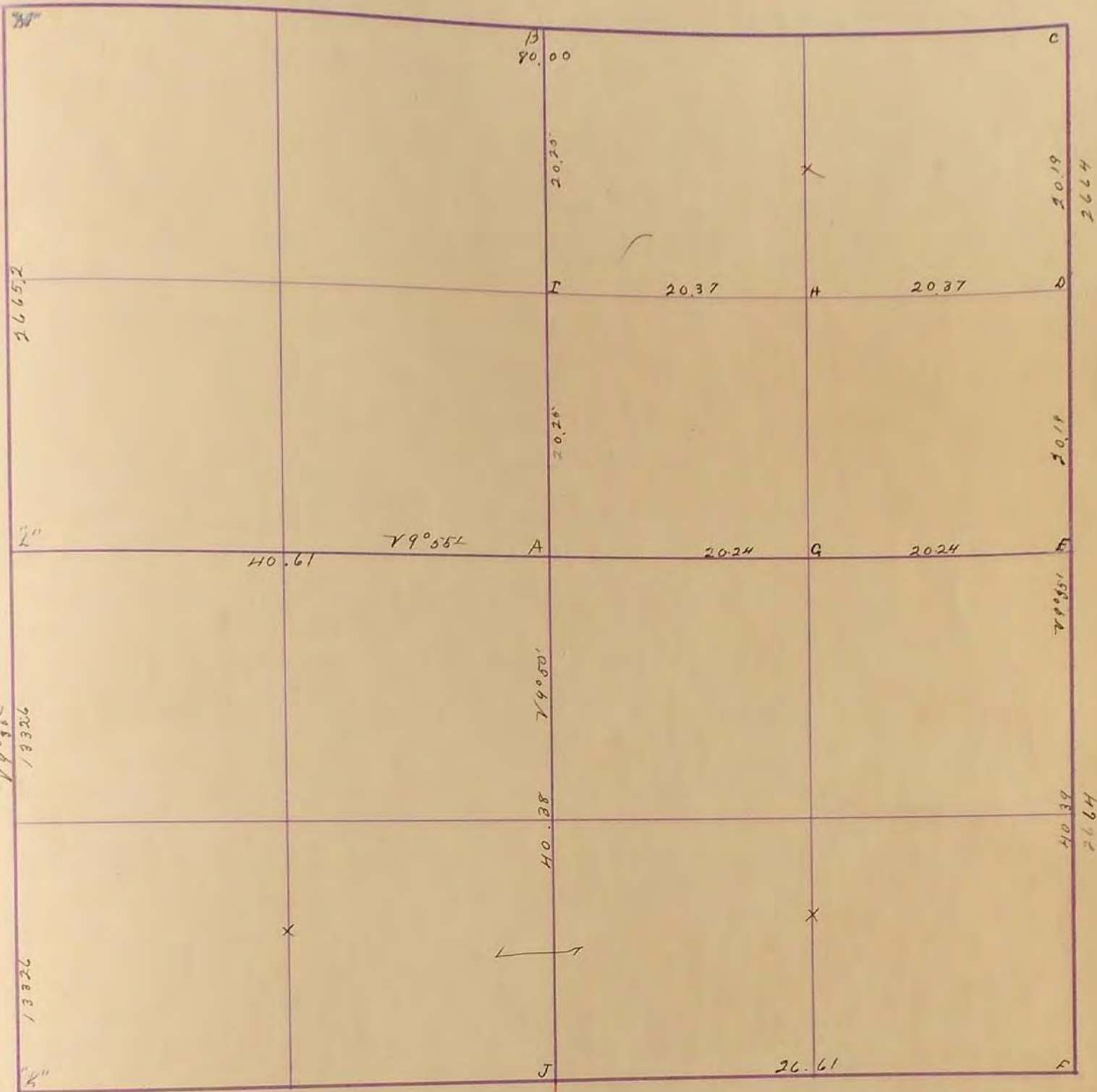


MURRAY COUNTY.

Section 29
 10798 McGill-Warner Co., Blank Book Manufacturers, St. Paul.

Township 106

Range 39



Sept. 1896

- A Post mound and Cite
- B Gov mound
- C " " "
- D Post mound and Cite
- E " " "
- F Gov mound
- G Post mound and Cite
- H " " "
- H. " " "
- J Gov mound

J. H. Hooltencroft Deputy

- "D" Stone: R.P. Bottom hole in steel cor. post SE. 47⁵; R.P. Tack in Blazed Light pole SW. 44³.
- "E" Stone: R.P. Tack in blazed tel pole East 43⁰; R.P. Tack in blazed Light pole West 30⁰.
- "F" Concrete Stone: R.P. Tack in tel pole S.E. 45^B; R.P. Tack in Light pole NW. 42⁷; R.P. Tack in sign post S.W. 33⁷.
- "G" Concrete Stone: R.P. Tack in Cor. fence post South 34⁰; R.P. Tack in Gate post SE 42³.

March 24, 1912 "E" Located "stone" 3.6' below gravel grade & 4.15' south of "Assumed" 2x2 hub used on grading project as 1/4 Cor.; Placed 10" steel fence post above stone: R.P. N&C, P.P. West 50⁵⁰; R.P. N&C, Cor. Post East 51³⁵; R.P. second steel fence post south of wood brace post in east fence line 64⁴⁰ (Post painted red).

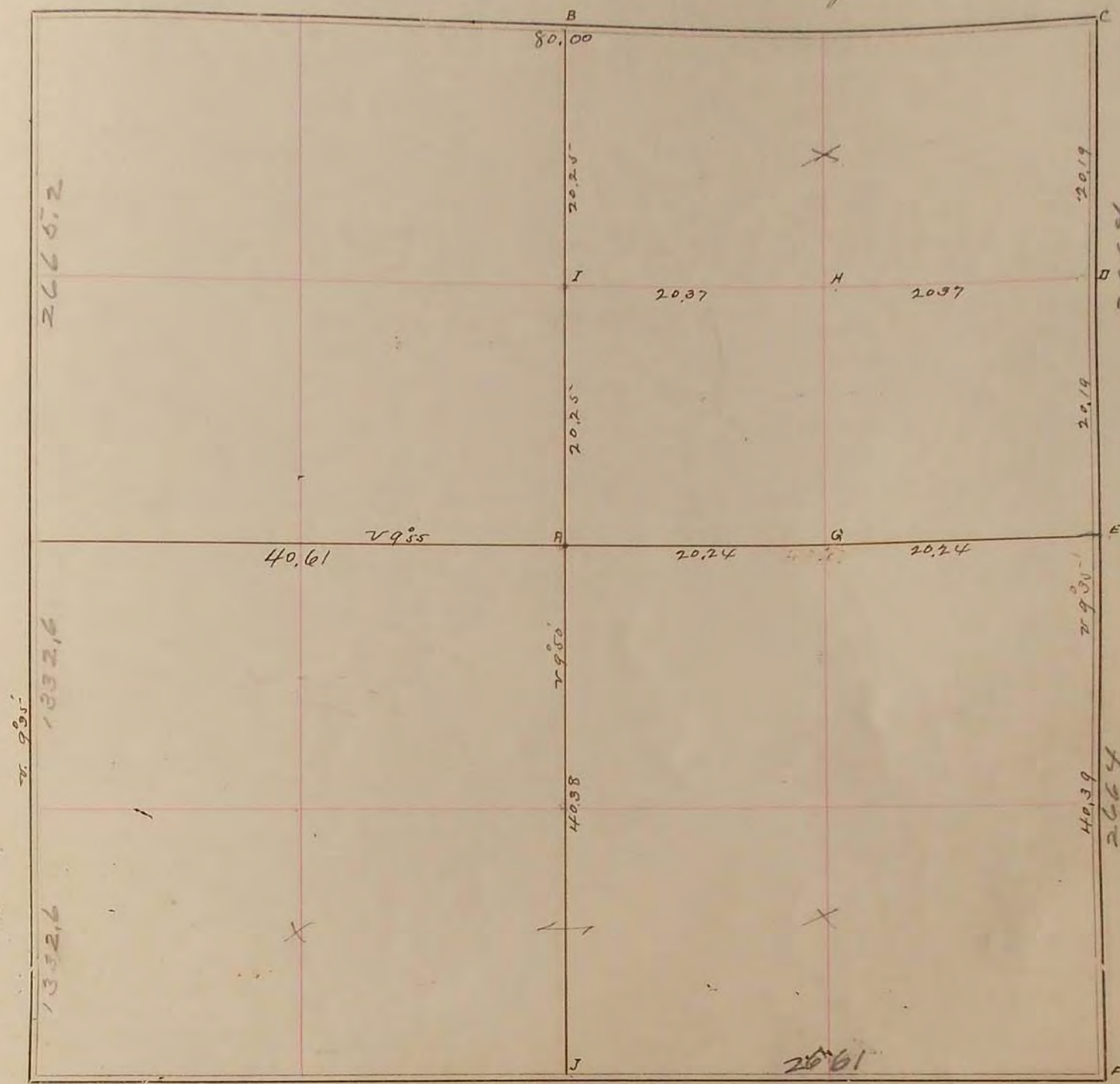
"D" E 1/4 Cor. North, Located field stone: R.P. Blm. hole in steel cor. post SE. 47⁵; R.P. Tack in blazed light pole SW. 44³.

"J" Located Conc. Stone 6" below oil mat surface. Placed spike above stone. R.P. N&C. Cor. Post South 34.25'; R.P. Steel Fence Post NE 44.75' R.P. Steel Fence Post NW (Painted Red) 44.13'

28
 29
 30
 31
 32
 33
 34
 35

SURVEY No. 76

Section 29 Town 106 Range 39



FIELD NOTES.

- Sept 1896
- A Post; mound & Pits
- B Gov. Mound
- C " " "
- D Post; mound and Pits
- E " " " "
- F Gov Mound
- G Post; mound and Pits
- H " " " "
- H " " " "
- J Gov Mound

J. W. Froelicher
Deputy

166.9
4.3
171.2

124
20.24
143.76

110.2
12.5
122.7

59
66
23
23
53
40
64